

August, 2010 Edition – THE CTG MONTHLY SURPLUS UPDATE ('MSU')

The Energy Industry's Most Reliable and Comprehensive Inventory Guide for New, Used and Refurbished Power Generation Equipment

Please visit www.Camelottech.com for the latest in surplus power generating equipment listings, energy industry conferences, educational seminars and unique career opportunities. We continue to look forward to servicing the energy industry and your power procurement requirements. Thank you!

17231 Camelot Court, Land O' Lakes, Florida 34638
Tel: 813.920.8725 • Fax: 813.343.5754 • Email: Sales@Camelottech.com

BIOMASS POWER PLANT



ITEM # CTG-BMP-0401

ONE (1) X 5.4MW/60HZ BIOMASS POWER PLANT: This unit is in good condition. Brushless AC Generator, Ideal SAB Type, FRAME: 21320-34.5. 4500 KW, 60 Hz. Brushless Exciter, FRAME: BE-14-13, TYPE: FRBA. 750 PSI Superheated system, 60,000 pounds per hour, Biomass Fuel. PGG Steam Turbine.
PRICE: \$1.5 MM US

GAS TURBINES



ITEM# CTG-GT2F-0304

ONE (1) X 23.5MW GE FRAME 5PA GAS TURBINE GENERATOR PACKAGE: Dual fuel unit, suitable for outdoor operation. Includes Mark IV Speedtronic Controls. Combined Cycle Equipment available under separate contract. Generator is 3600 rpm, 3ph, 60Hz, 33,700 KVA @ .85 PF, air cooled, Class F with 28,600 kW capacity rating. Units have 6,161 hours since overhaul.
PRICE: \$3.5 MM US



ITEM# CTG-GTD-0709

ONE (1) X 17.3MW GE FRAME 5LA (MS-5001 LA) GAS TURBINE GENERATOR SET: This turbine is a liquid fuel unit. Unit has very low starts and hours: 1,854 starts and 9,145 total hours (3,770 hours since major). The generator is 3600 rpm, 3ph, 60Hz, 13.8kV, 21,176 KVA. Gearbox is in need of repair. Replacement unit will be included in sale.
PRICE: \$1.25 MM US



ITEM# CTG-GT2-0403

ONE (1) 3.9 MW VIKING GAS TURBINE GENERATOR PLANT: The Power Plant is comprised of three Viking Gas Turbines, KG2-3C models. Units are currently set up for natural gas but can be converted to liquid fuel. Site consists of three turbine containers and inlet containers and a control room container. 500 hours run time since new. Units are currently in storage.
PRICE: Call For Pricing



ITEM# CTG-GTN-0109

ONE (1) X 5.1 MW ALSTOM GAS TURBINE GENERATOR SET: Performance: 5100 KW, 4160 V, 11.299 BTU/KWH (LHV), 11,085 RPM, 60 Cycle KATO Generator. Package includes Auxiliary Equipment and Controls. Excellent Condition with only 30,000 Hours. Complete set of spare parts. Generator capacity can be increased to 6.0 MW using Steam Injection System. The unit is sold "As Is/Where Is".
PRICE: \$1.95 MM US



ITEM # CTG-GT2F-0408-01,02,03

THREE (3) X MOBILE ALSTOM GAS TURBINE GENERATOR SETS: 7.9MW ea. at 13.8kV, 50/60HZ originally packaged in Houston, TX in 2002/3. Preferred solution is 2 units operating and 1 on standby to ensure maximum reliability and availability of the plant. Units are exceptionally well-maintained, very low hours. Modular approach enables maximum site operational flexibility and will ensure high levels of overall site availability.
PRICE: \$1.85 MM US Each /\$4.5MM All



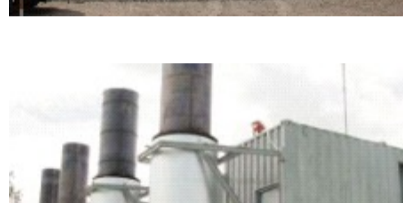
ITEM# CTG-GTD-0712

ONE (1) X 6 MW, 60HZ VIKING TURBINE POWER PLANT: The Power Plant is comprised of four Viking Gas Turbines. The turbines, one model KG2-3C and three model KG2-3A machines are currently upgraded to KG2-3C technology and firing status. These four gas turbine generators have been inspected, repaired and upgraded to allow for continued operation at higher firing temperatures.
PRICE: \$2.5 MM US



ITEM# CTG-GTD-0707

TWO (2) X 6 MW ALLISON 501KB GAS TURBINE GENERATION PLANT: CTG is offering 2 X Allison 501KB units that are fully enclosed and self-contained. Units are well-maintained, low hour: 10,098.5 and 8,212.3. The gas turbine is designed to run on light #2 oil. Easily convertible to natural gas. Voltage: 13.8kV Freq.: 60Hz. The unit is sold "As Is/Where Is". Buyer Removes.
PRICE: Call For Pricing



ITEM# CTG-GT2F-0307-03

ONE (1) X FRAME 5D 60 HZ DUAL FUEL GAS TURBINE GENERATOR SET: One simple cycle, single shaft gas turbine. Unit is dual fuel, Frame 5000, D Class. 7566 Fired Hours, 1758 Hours Since Last Overhaul. Generator type ATB-2 (Air Cooled). 16 Compressor stages, 2 Turbine stages.
PRICE: \$775,000 US



STEAM TURBINES



ITEM# CTG-STNC-2026

ONE (1) x 45MW GE NON-CONDENSING EXTRACTION STEAM TURBINE GENSET: 1305 psig inlet pressure at 935 degrees F with 700,000lb/hr flow. Extraction of 310 psig and 650,000lb/hr. Exhaust pressure 55 psig and 500,000lb/hr. Unit manufactured in 1983 and taken out of service in 2003 and on turning gear. Unit sold As Is/Where Is. Buyer removes.
PRICE: \$3.5 MM US



ITEM# CTG-STG-2032

ONE (1) x 75MW GE STEAM TURBINE GENERATOR SET: GE steam turbine generator unit with inlet steam conditions of 1450 PSIG at 1000 deg F, and a 3.5 in. Hg exhaust pressure. 525,000 lbs/hr maximum high pressure steam output. 1,510 PSI @ 1,005 deg F at Superheater Outlet. The 3600 RPM unit is connected to a 96,000 KVA (4016/866 amp) 13.8 kV, 3 Phase 60Hz Generator. The unit is well maintained and ready for disassembly. Plant decommissioned in 2004.
PRICE: \$4.5 MM US



ITEM# CTG-STNC-2022

ONE (1) x 11 MW TURBODYNE STEAM TURBINE GEN SET: One (1) complete 60 Hz. 11 MW Turbodyne Non-Condensing Steam Turbine Gen Set. 1TQ7 Frame, 3600 rpm, includes Electric Machinery Mfg. Generator, 15,825 Kva, 13,450 Kw. Also included: One building (30 X 60 X 30) that houses the turbogenerator system, 10 ton overhead crane included with building, switch gear included with sale.
PRICE: \$580,000 US



ITEM# CTG-STC-2020

ONE (1) x 7.5 MW GE STEAM TURBINE GENSET: With Generator, 3600 RPM exciter, Ingersoll-Rand condenser. Also included: lube oil reservoir with coolers, circulating pumps, steam ejector, trip & throttle valve, switchgear and controls, relating connections.
PRICE: \$425,000 US



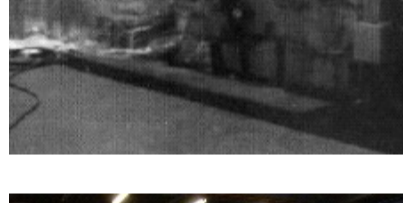
ITEM# CTG-STNC-2025

ONE (1) x 2.5MW BLOHM + VOSS NON-CONDENSING STEAM TURBINE GENERATOR SET: This 1994 complete unit consists of a back pressure steam turbine, gearbox and alternator which are located on a common frame made of steel structure. Scope includes complete control and electrical panels. Available with all reducing valves, safety valves, manifold, P/T live steam: 60 bara / 480 C. Capacity: 22 mt/hr.
PRICE: \$456,000 US



ITEM# CTG-STC-2037

ONE (1) x 36 MW EKM 50Hz STEAM TURBINE GENERATOR SET WITH DIRECT HEATED KETTLE: Type T 2.5-90. Manufactured in 1972 with 160,000 total working hours. Kettle make: Babcock, Waterpipe, natural circulation, Gas Heated: 160 t/h, 500C, 76 bara, Commissioned 1993 and working hours since that time are 24,000. Unit has been decommissioned and stored since 1998. Unit comes complete with controls, manuals, ventilators, etc. Efficiency : 92% . Equipment Is In Excellent Condition.
PRICE: Call For Pricing



ITEM# CTG-STC-2036

ONE (1) x 1.5 MW 50 HZ. CONDENSING STEAM TURBINE GENERATOR SET: One (1) 1500Kw 50 Hz. Siemens Multistage condensing steam turbine (with extraction), with Single reduction gear box, Synchronous AC Generator, Pipe bundle steam condenser, Control and lubricating oil system complete with oil tank, main oil pump (driven by the turbine shaft), filters, valves, interconnecting piping, water cooled oil chiller, Inlet combined stop and emergency valve with integral steam strainer, hydraulic servomotor operated inlet control valves, hydraulic governor, high speed and low speed couplings, steam seal system, all metal labyrinth type gland packing.
PRICE: \$575,000 US



HEAVY FUEL OIL POWER PLANT



ITEM# CTG-HFP-0107

SIX (6) x 3.8 Mw 60 Hz. WARTSILA 8L32 RECIPROCATING ENGINES: CTG is offering these six units as a complete power plant operating on heavy fuel oil @ (720 rpm, HFO) TOTAL OUTPUT = 22 Mw. The units are in excellent condition. There are six main generators 3AC. 2 Fuel Oil Systems for 3 x Wartsila 8L32. 2 Feeder/Booster units. 2 Overflow valve (HFO/MDF).
PRICE: Call For Pricing

DIESEL GENERATORS



ITEM # CTG-DGD-0243

ONE (1) X 1000kW EMD 12-645-E1 RECIPROCATING DIESEL GENERATOR SET: CTG is offering for immediate sale One (1) low hour, gently used EMD 12-645-E1 Diesel engine driven generator set and shall be sold and removed as a complete packaged system. The unit consists of a 12-cylinder, 2-stroke cycle, 900 RPM diesel engine direct connected to a KATO Model SR9C, 1200 KVA synchronous AC generator, 3/60/480V.
PRICE: \$675,000 US Fully Refurb. w/ 8000 Hr. Warranty



ITEM # CTG-DGD-0231

ONE (1) X 1100 HP NEW AND UNUSED CAT 3508B POWER UNIT: CTG is offering one New Caterpillar 3508B Power Unit with Electric Governor and 24V Electric Starter. Radiator Cooled. Output: 1100HP at 1800 RPM. Unit is under Caterpillar factory Warranty.
PRICE: \$265,000 US



ITEM # CTG-DGN-5010

ONE (1) X 3 MW USED NATURAL GAS GENSET PLANT: This power plant is made up of four (4) Simpover enclosed natural gas gensets. Two (2) 1.1 MW Cooper Superior 2408GTL units and two (2) 500 kW Mitsubishi GS1A2-PTK units. Switchgear and controls included.
PRICE: \$750,000 US



ITEM # CTG-DGD-0808

ONE (1) X 50 MW 50/60HZ CONTINUOUS DUTY EMD 645FB DIESEL GENERATING POWER STATION: This set consists of (20) custom refurbished 2000/2500kW 50/60Hz EMD Power Generator Sets Model Stationary Power Unit (SPU) 20cyl. medium speed 750/900 RPM in sound attenuated houses. Heat Rate: 9240. Ideal as a peaking plant, emergency backup, cogenerating, or remote self generating plant. Designed for quick installation and removal. CTG will include Turn-key Installation, Delivery, Site Start-Up and Commissioning at the customer's project site under separate contract.
PRICE: \$21 MM US



ITEM # CTG-DGN-0112

EIGHT (8) X UNUSED CUMMINS 1750 KW NATURAL GAS DRIVEN GENSETS: Eight (8) Unused Cummins Natural Gas driven generator sets. These units are 18-cylinder, 4 cycle, 1514 RPM with a brushless, 4-pole, revolving field generator, 3/60/13.8kV. Lean burn technology provides exhaust emissions at 500mg/Nm3. Sold AS IS/ WHERE IS. Warranty available under separate contract.
PRICE: \$775,000 US Each

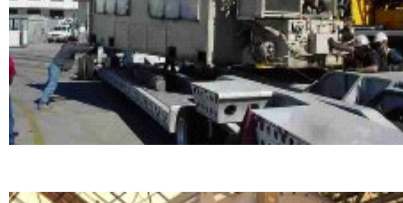


ELECTRICAL GENERATORS



ITEM # CTG-EG-6116

ONE (1) X 33000 KVA ELECTRIC MACHINERY GENERATOR END: CTG will offer and supply one (1) major used ELECTRIC MACHINERY GENERATOR 33,300 KVA. Manufacturer - Electric Machinery Co. Synchronous generator, 33,300 kVA (26,000 kW), NEMA rated at sea level and 59 deg. F, 0.85 power factor, 60 Hz, 3 Phase, 13,800 volts, 2 pole, 3600 RPM. Unit sold As Is/Where Is.
PRICE: \$725,000 US



ITEM # CTG-EG-6114

ONE (1) X NEW SURPLUS TOSHIBA 7FH2 GENERATOR END: This is a 2002 new surplus Toshiba 234 MVA generator end that has been stored in a warehouse and has heating elements installed. 234,000 KVA, 60 Hz, 0.85 PF, 18 KV, 3600 RPM. Designed for use with a GE 7FA+e 7241 Combustion Turbine.
PRICE: Call For Pricing



The Camelot Technologies Group International, Inc. (CTG) <http://www.Camelottech.com> is a privately held energy and power generation equipment sales and services company formed in 1996, with its corporate headquarters now located in Land O' Lakes, Florida (near Tampa, Florida). CTG's mission is to offer buyers and sellers a dynamic and fluid exchange of high quality, new, refurbished and decommissioned utility equipment. CTG also offers appraisal and valuation, project management, technical engineering, construction and procurement services to its clients, as the leading and fully integrated enterprise solution provider to the energy industry. We are the world's leading aggregator and supplier of new, used and refurbished power generation surplus equipment for fossil fuel, steam and renewable energy power plants. This MSU report highlights only a small sampling of the major electrical equipment and components representative of CTG's inventory.

For More Information or to Schedule an Immediate Inspection Please Contact Us at:
The Camelot Technologies Group International, Inc. (CTG)
17231 Camelot Court, Land O' Lakes, Florida 34638
Tel: 813.920.8725 • Fax: 813.343.5754
Email: Sales@Camelottech.com
Email: Info@Camelottech.com

This communication is considered privileged, private, confidential and copyrighted under law. Under no circumstances, shall this document be copied, posted on another website, reproduced in any format or manner nor re-distributed in whole or in part without the express written permission of CTG.